

End Point Operations for WebLogic 1.0

This document supports the version of each product listed and supports all subsequent versions until the document is replaced by a new edition. To check for more recent editions of this document, see <http://www.vmware.com/support/pubs>.

EN-002497-00

vmware[®]

You can find the most up-to-date technical documentation on the VMware Web site at:

<http://www.vmware.com/support/>

The VMware Web site also provides the latest product updates.

If you have comments about this documentation, submit your feedback to:

docfeedback@vmware.com

Copyright © 2017 VMware, Inc. All rights reserved. [Copyright and trademark information.](#)

VMware, Inc.
3401 Hillview Ave.
Palo Alto, CA 94304
www.vmware.com

Contents

1	End Point Operations for WebLogic	5
2	Introduction to End Point Operations for WebLogic	7
3	Install the End Point Operations for WebLogic	9
4	Configuring Server Object Credentials	11
5	Dashboards in End Point Operations for WebLogic	13
6	Access Dashboards	15
	Widgets in End Point Operations for WebLogic	15
7	End Point Operations for WebLogic Metrics	17
	WebLogic x Server	17
	Application Service	18
	Entity EJB Service	18
	Execute Queue Service	19
	JDBC Connection Pool Service	19
	JMS Destination Service	19
	Webapp Service	20
	WebLogic JMS Server Service	20
	WebLogic JTA Resource Service	21
	Stateful EJB Service	21
	Message Driven EJB Service	22
	Stateless EJB Service	23
	WebLogic NodeManager x Server	23
	Index	25

End Point Operations for WebLogic

The documentation for End Point Operations for WebLogic 1.0 includes the solution information to monitor the WebLogic objects like servers and apps.

The End Point Operations for WebLogic documentation includes the installation of the Solution PAK file from the software or the update UI.

Intended Audience

The information in this guide is intended for operations personnel who set up and support the End Point Operations for WebLogic infrastructure.

VMware Technical Publications Glossary

VMware Technical Publications provides a glossary of terms that might be unfamiliar to you. For definitions of terms as they are used in VMware technical documentation, go to <http://www.vmware.com/support/pubs>.

Introduction to End Point Operations for WebLogic

2

The WebLogic server enables you to quickly develop and deploy secure manageable solutions and contain J2EE technologies.

The WebLogic server provides a complete set of services to the modular components and handles application behavior automatically.

Install the End Point Operations for WebLogic

3

The End Point Operations for WebLogic consists of a PAK file. You can install the End Point Operations for WebLogic to monitor objects and collect metrics.

Prerequisites

Verify that you have installed the Endpoint operations agent using the system administrator account.

Procedure

- 1 Log in to the vRealize Operations Manager with administrator privileges.
- 2 In the left pane of vRealize Operations Manager, click the **Administrator** icon and click **Solutions**.
- 3 On the **Solutions** tab, click the plus sign.
- 4 Browse to locate the temporary folder and select the PAK file.
- 5 Click **Upload**.
The upload might take several minutes.
- 6 Read and accept the EULA, and click **Next**.
Installation details appear in the window during the process.
- 7 When the End Point Operations for WebLogic is installed, click **Finish**.

Configuring Server Object Credentials

4

You can configure a credential for a server object for an Admin server or a Managed server to discover and monitor the services running in the server.

Prerequisites

Verify that you have the server admin credentials.

Procedure

- 1 To configure the credentials, from the vRealize Operations Manager page, select **Administration > Inventory Explorer**.
- 2 Expand **Object Types** and select an object type.
- 3 You can either select **WebLogic x**, or **WebLogic Admin x** and select the object.
- 4 Click the **Edit Object** icon.
- 5 From the Edit Object window, click the plus sign to add a credential name.
The Manage Credential window appears.
- 6 Add the **Credential name**, **admin.username**, and **admin.password**, and click **OK**.
- 7 Click **OK**.

Dashboards in End Point Operations for WebLogic

5

The dashboards in End Point Operations for WebLogic provides you with a graphical and topological view of the discovered servers and services from the Endpoint operations agent.

Access Dashboards

You can use the dashboards to view, monitor and troubleshoot objects in your cloud infrastructure.

Prerequisites

Verify that you have access to vRealize Operations Manager and permission to view a dashboard.

Procedure

- ◆ To access the dashboards, select the **Dashboard List > End Point Operations for WebLogic** option from vRealize Operations Manager menu bar.

Widgets in End Point Operations for WebLogic

The End Point Operations for WebLogic dashboard is a graphical and topological representation of the discovered servers, services, and its corresponding object relationship.

Figure 6-1. End Point Operations for WebLogic Dashboard

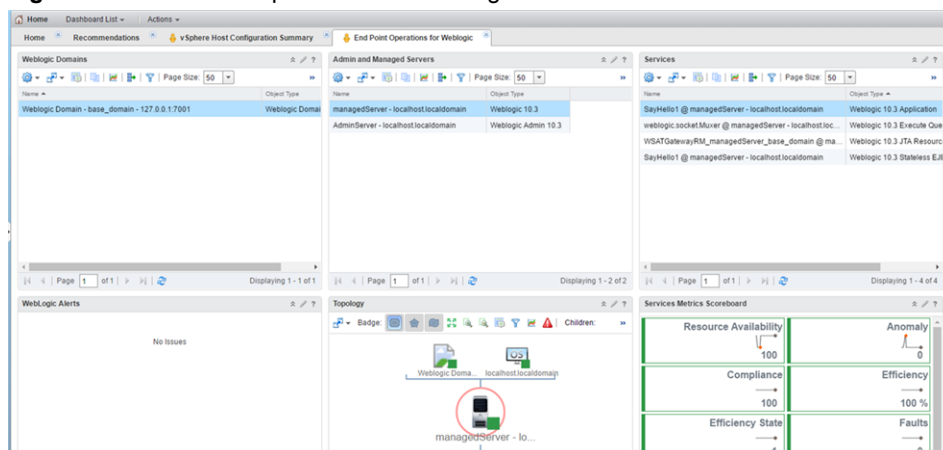


Table 6-1. Widgets in End Point Operations for WebLogic Dashboard

Widget	Description
Weblogic Domain	This widget provides a list of discovered WebLogic domains from the End Point operations agent.
Admin and Managed Servers	This widget provides a list of Admin and Managed servers that are discovered for the selected domain from the WebLogic domain widget.
Services	This widget displays a list of services and applications running on each of the selected server from the Admin and Managed Server widget.
WebLogic Alerts	This widget provides information of active alerts for the WebLogic servers and services.

Table 6-1. Widgets in End Point Operations for WebLogic Dashboard (Continued)

Widget	Description
Topology	This widget provides a topological view of the selected server from the Admin and Managed Server widget. The topology displays the relationship between domains, servers, services, and platform.
Services Metrics Scoreboard	This widget displays the current metric value for the services selected from the Services widget and also the values for the last six hours as sparkline.

End Point Operations for WebLogic Metrics

7

The End Point Operations for WebLogic plug-in discovers and collects metrics for different services.

You can view all metrics from the End Point Operations for WebLogic UI.

This chapter includes the following topics:

- [“WebLogic x Server,”](#) on page 17
- [“Application Service,”](#) on page 18
- [“Entity EJB Service,”](#) on page 18
- [“Execute Queue Service,”](#) on page 19
- [“JDBC Connection Pool Service,”](#) on page 19
- [“JMS Destination Service,”](#) on page 19
- [“Webapp Service,”](#) on page 20
- [“WebLogic JMS Server Service,”](#) on page 20
- [“WebLogic JTA Resource Service,”](#) on page 21
- [“Stateful EJB Service,”](#) on page 21
- [“Message Driven EJB Service,”](#) on page 22
- [“Stateless EJB Service,”](#) on page 23
- [“WebLogic NodeManager x Server,”](#) on page 23

WebLogic x Server

The End Point Operations for WebLogic collects the WebLogic x Server metrics.

Table 7-1. WebLogic x Server Metrics

Metric Name	On by Default
Resource Availability	No
JMS Active Connections	No
JMS Total Connections	No
JMS Total Connections per Minute	No
JMS Active Servers	No
JMS Total Servers	No
JTA Seconds Active	No

Table 7-1. WebLogic x Server Metrics (Continued)

Metric Name	On by Default
JTA Seconds Active per Minute	No
JTA Transactions Rolled Back	No
JTA Transactions Rolled Back per Minute	Yes

Application Service

The End Point Operations for WebLogic collects the Application Service metrics.

Table 7-2. Application Service Metrics

Metric Name	On by Default
Resource Availability	Yes

Entity EJB Service

The End Point Operations for WebLogic collects the entity EJB service metrics.

Table 7-3. Entity EJB Service Metrics

Metric Name	On by Default
Resource Availability	Yes
Transactions Rolled Back	No
Transactions Rolled Back per Minute	Yes
Transactions Committed	No
Transactions Committed per Minute	Yes
Transactions Timed Out	No
Transaction Timed Out per Minute	No
Pool Accesses	No
Pool Accesses per Minute	No
Pool Misses	No
Pool Misses per Minute	No
Pool Beans Idle	No
Pool Beans Available	No
Pool Beans In Use	No
Pool Waiters	No
Pool Timeouts	No
Pool Timeouts per Minute	No
Cached Beans	No
Cache Hits	No
Cache Hits per Minute	No
Cache Misses	No
Cache Misses per Minute	No
Activates	No

Table 7-3. Entity EJB Service Metrics (Continued)

Metric Name	On by Default
Activates per Minute	No
Passivates	No
Passivates per Minute	No

Execute Queue Service

The End Point Operations for WebLogic collects the Execute Queue Service metrics.

Table 7-4. Execute Queue Service Metrics

Metric Name	On by Default
Resource Availability	Yes
Serviced Requests	No
Serviced Requests per Minute	Yes
Idle Threads	Yes
Pending Requests	Yes

JDBC Connection Pool Service

The End Point Operations for WebLogic collects the JDBC Connection Pool Service metrics

Table 7-5. JDBC Connection Pool Service Metrics

Metric Name	On by Default
Resource Availability	Yes
Leaked Connections	No
Leaked Connections per Minute	Yes
Total Connections	No
Total Connections per Minute	No
Active Connections	Yes
Max Connections	No
Max Connections per Minute	No
Waiting for Connection Current Count	Yes
Failures to Reconnect	No
Failures to Reconnect per Minute	No

JMS Destination Service

The End Point Operations for WebLogic collects the JMS Destination Service metrics.

Table 7-6. JMS Destination Service Metrics

Metric Name	On by Default
Resource Availability	Yes
Bytes Current	No
Bytes Pending	No

Table 7-6. JMS Destination Service Metrics (Continued)

Metric Name	On by Default
Bytes Received	No
Bytes Received per Minute	Yes
Bytes Threshold Time	Yes
Bytes Threshold Time per Minute	No
Consumers Current	Yes
Consumers Total	No
Consumers Total per Minute	No
Messages Current	No
Messages Pending	No
Messages Received	No
Messages Received per Minute	No
Messages Threshold	No
Messages Threshold per Minute	No

Webapp Service

The End Point Operations for WebLogic collects the Webapp Service metrics.

Table 7-7. Webapp Service Metrics

Metric Name	On by Default
Sessions Created	No
Sessions Created per Minute	Yes
Current Active Sessions	Yes
Resource Availability	Yes

WebLogic JMS Server Service

The End Point Operations for WebLogic collects the WebLogic JMS Server Service metrics.

Table 7-8. JMS Server Service Metrics

Metric Name	On by Default
Resource Availability	Yes
Bytes Current	No
Bytes Pending	No
Bytes Received	No
Bytes Received per Minute	Yes
Bytes Threshold Time	No
Bytes Threshold Time per Minute	Yes
Destinations Current	Yes
Destinations Total	No
Destinations Total per Minute	No

Table 7-8. JMS Server Service Metrics (Continued)

Metric Name	On by Default
Messages Current	No
Messages Pending	No
Messages Received	No
Messages Received per Minute	No
Messages Threshold	No
Messages Threshold per Minute	No
Session Pools Current	No
Session Pools Total	No
Session Pools Total per Minute	No

WebLogic JTA Resource Service

The End Point Operations for WebLogic collects the WebLogic JTA Resource Service metrics.

Table 7-9. WebLogic JTA Resource Service Metrics

Metric Name	On by Default
Resource Availability	Yes
Transactions Committed	No
Transactions Committed per Minute	Yes
Transaction Heuristic Commits	No
Transaction Heuristic Commits per Minute	No
Transaction Heuristic Hazard Total	No
Transaction Heuristic Hazard Total per Minute	No
Transaction Heuristic Mixed Total	No
Transaction Heuristic Mixed Total per Minute	No
Transaction Heuristic Rollbacks	No
Transaction Heuristic Rollbacks per Minute	No
Transaction Heuristics Total	No
Transaction Heuristics Total per Minute	No
Transactions Rolled Back	No
Transactions Rolled Back per Minute	Yes
Transactions Total	No

Stateful EJB Service

The End Point Operations for WebLogic collects the Stateful EJB Service metrics.

Table 7-10. Stateful EJB Service Metrics

Metric Name	On by Default
Resource Availability	Yes
Transactions Rolled Back	No

Table 7-10. Stateful EJB Service Metrics (Continued)

Metric Name	On by Default
Transactions Rolled back per Minute	Yes
Transactions Committed	No
Transactions Committed per Minute	No
Transactions Timed Out	No
Transactions Timed Out per Minute	No
Cached Beans	No
Cached Hits	No
Cached Hits per Minute	No
Cached Misses	No
Cached Missed per Minute	No
Activates	No
Activates per Minute	No
Passivates	No
Passivates per Minute	No

Message Driven EJB Service

The End Point Operations for WebLogic collects the Message Driven EJB Service metrics.

Table 7-11. Message Driven EJB Service Metrics

Metric Name	On by Default
Resource Availability	Yes
Transaction Rolled Back	No
Transaction Rolled Back per Minute	Yes
Transactions Committed	No
Transactions Committed per Minute	Yes
Transactions Timed Out	No
Transactions Times Out per Minute	No
Pool Accesses	No
Pool Accesses per Minute	No
Pool Misses	No
Pool Misses per Minute	No
Pool Beans Destroyed	No
Pool Beans Destroyed per Minute	No
Pool Beans Idle	No
Pool Beans Available	No
Pool Beans In Use	No
Pool Waiters	No
Pool Timeouts	No
Pool Timeouts per Minute	No

Stateless EJB Service

The End Point Operations for WebLogic collects the Stateless EJB Service metrics.

Table 7-12. Stateless EJB Service Metrics

Metric Name	On by Default
Resource Availability	Yes
Transaction Rolled Back	No
Transaction Rolled Back per Minute	Yes
Transactions Committed	No
Transactions Committed per Minute	Yes
Transactions Timed Out	No
Transactions Times Out per Minute	No
Pool Accesses	No
Pool Accesses per Minute	No
Pool Misses	No
Pool Misses per Minute	No
Pool Beans Destroyed	No
Pool Beans Destroyed per Minute	No
Pool Beans Idle	No
Pool Beans Available	No
Pool Beans In Use	No
Pool Waiters	No
Pool Timeouts	No
Pool Timeouts per Minute	No

WebLogic NodeManager x Server

The End Point Operations for WebLogic collects the WebLogic NodeManager x Server metrics.

Table 7-13. WebLogic NodeManager x Server Metrics

Metric Name	On by Default
Resource Availability	Yes

Index

A

accessing **15**

J

J2EE **7**

S

server object **11**

W

WebLogic **13**

widgets **15**

